

MIDLAND CUBING GUIDELINES

BUNDLES/POLES/CRATES

UNDER 10 FT. LONG — UNDER 72" HIGH



ACTUAL CUBE | **STACKABLE**

UNDER 10 FT. LONG — UNDER 72" HIGH



ACTUAL CUBE | **STACKABLE**

UNDER 10 FT. LONG — OVER 72" HIGH

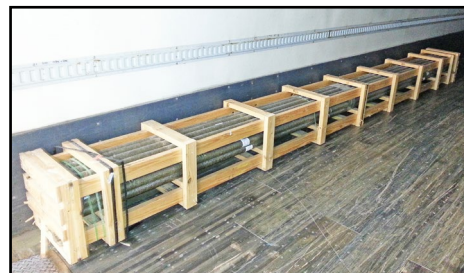


CUBE TO ROOF

10 FT. LONG & OVER — UNDER 48" WIDE



CUBE TO ROOF



CUBE TO ROOF

10 FT. LONG — OVER 48" WIDE



LINEAR CUBE



LINEAR CUBE

5 SKIDS & UNDER

SKIDS 72" HIGH OR LESS



ACTUAL CUBE | **STACKABLE**

SKIDS OVER 72" HIGH



CUBE TO ROOF

COMBINATION OF BOTH



ACTUAL CUBE



CUBE TO ROOF

SKIDS 48" HIGH OR LESS

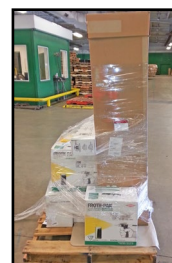


ACTUAL CUBE | **NON STACKABLE**



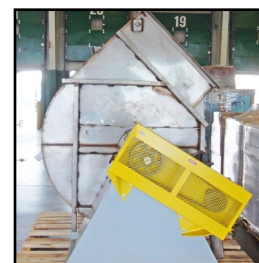
ACTUAL CUBE | **NON STACKABLE**

SKIDS OVER 48" HIGH



CUBE TO ROOF | **NON STACKABLE**

SKIDS OVER 48" HIGH



CUBE TO ROOF | **NON STACKABLE**

6 SKIDS & OVER

8 SKIDS



CUBE TO ROOF

STACKED IN LESS THAN 10FT. TRAILER



CUBE TO ROOF

10 SKIDS



LINEAR CUBE

STACKED IN TRAILER — 10 FT. & OVER



LINEAR CUBE

10 SKIDS OR LESS — 48" HIGH OR LESS



ACTUAL CUBE | **NON STACKABLE**

11 SKIDS OR LESS — 48" HIGH OR LESS



LINEAR CUBE | **NON STACKABLE**

6 SKIDS OR MORE — OVER 48" HIGH



LINEAR CUBE | **NON STACKABLE**

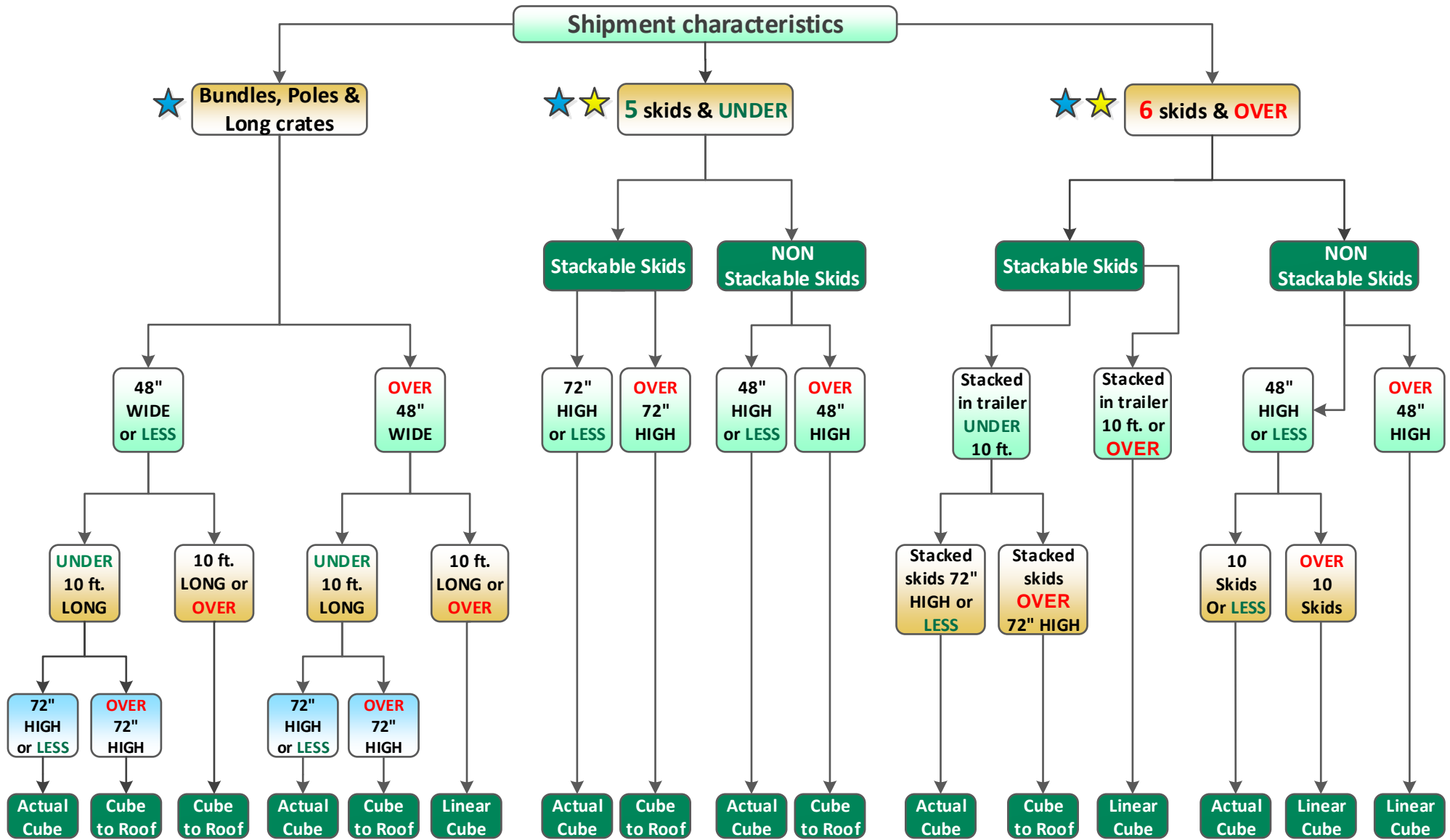
ACTUAL CUBE:
LENGTH X WIDTH X HEIGHT

CUBE TO ROOF:
LENGTH X WIDTH X 96"

LINEAR CUBE:
OCCUPIED TRAILER SPACE

ACTUAL CUBE APPLIES FOR PIECES
THAT ARE 200 LBS OR LESS AND
UNDER 20 FT. LONG

MIDLAND CUBING GUIDELINES



★ Actual cube applies for pieces that are 200 lbs. or less and under 20 ft. ★ Anything over 48" tall and non stackable is subject to Cube to Roof ★ Assumes 40 x 48 standard skids